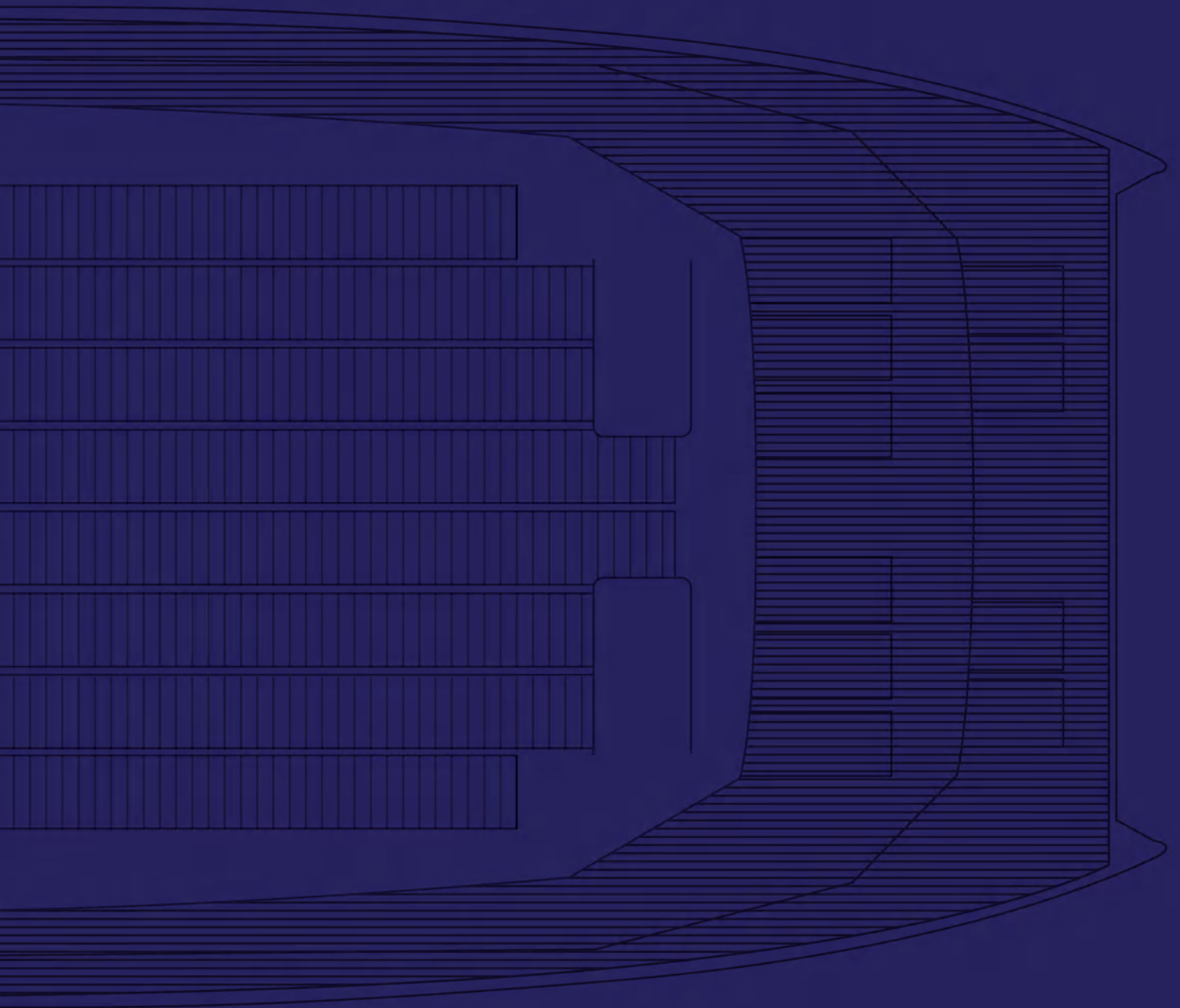




OCEAN DIAMOND





SEA LEISURE

YACHTING GROUP

MANUFACTURING · LEISURE · VENTURES



## TABLE OF CONTENT

---

<b>Ocean Diamond Range</b>	<b>6</b>
<b>Ocean Diamond - Boutique</b>	<b>9</b>
Plans	50
<b>Ocean Diamond - Explorer</b>	<b>57</b>
Plans	60
<b>Ocean Diamond - Event</b>	<b>74</b>











## OCEAN DIAMOND RANGE

---

The flagship of the fleet, a new concept, the Ocean Diamond, a floating boutique hotel launched in Sri Lankan waters.

The design structure has three levels. The upper level has an air-conditioned lounge and bar area opening on to a relaxed sundeck. The cabins are located on the main deck and lower deck, above the waterline.

The Ocean Diamond, a cruising boat equipped with 10 comfortable palatial cabins with en-suites and can host up to 22 guests. Allowing you to step out on to your private balcony and take in the picturesque seascapes.

This vessel has been customized specifically for the tropical market, featuring an open flybridge and sea-facing configuration.





## OCEAN DIAMOND



### OCEAN DIAMOND - BOUTIQUE

---

The Ocean Diamond is a floating boutique hotel, launched in Sri Lankan waters by Sea Leisure Yachting Group. It's a cruising boat equipped with 10 comfortable cabins. Allowing you to step out on to your private balcony and take in the picturesque seascapes. This vessel has been customized specifically for the tropical market, featuring an open flybridge and sea-facing configuration.

The Ocean Diamond is highly customizable and its next version will have 12 cabins.



### OCEAN DIAMOND - EXPLORER

---

Sea Leisure Yachting Group's design and engineering team have created the owners version, suitably named the Explorer. To which can be constructed and designed to the owners needs and requirements, with 2 master suites, 3 guest cabins, just one of the options

The Explorer's great space and solace, along with the sporty yet dignified appearance gives the satisfaction elegance on the water.









# OCEAN DIAMOND

## OCEAN DIAMOND - BOUTIQUE

Model	Ocean Diamond 27
Builder	BAFF Polymech (Pvt) Ltd.
Architects	Sabrosa Rain
Cabin details	10 cabins
Passengers capacity	22 passengers + 10 crews
Overall Length	26.6 m
Maximum beam	12.5 m
Draft	1.7 m
Air draft	36.5 m
Light displacement	90 T
Cruising speed	8 knots
Maximum speed	11 knots
Mast clearance	30 m
Sail area (genoa)	160 m2
Engines	2 x 168 KW
Fuel Capacity	8 x 600 liters
Fresh water tank	6 x 600 liters
Black water tank	14 x 25 liters
Water maker	2 x Aqua-Base YC4 (215 Liter/hour)
Electrical installation	24 Volt/DC & 230 Volt/AC
Battery capacity	48 KW (18 x 220 Ah)
Generators	3 x 27 KW Cummins Marine type
Solar Power	13.5 KW
Navigation	Raymarine









## SKY BRIDGE

The curves and lines of The Ocean Diamond maximizes the sense of freedom with the luxurious comfort.

The sky bridge design is functional, combining all the visibility benefits of an elevated control station with spectacular views, sunpods aft and plenty of versatile space.

Its radiating space itself is a status and gives you the sense of being in a larger boat.





When you step onboard you belong, there is no unnecessary wandering. The large fly-bridge area with sun-pods and sunshade for enjoying the tropical days and the views as you sail around the islands and beaches.











*"No literature is richer than that of the sea. No story is more enthralling, no tradition is more secure."*





## TOP DECK - FORWARD COCKPIT

This is where it all happens, the epicenter, the heart in every sense.

Soaking up the sunshine on the loungers and watching the world go by or enjoying a drink at the bar and dancing into the starry filled night sky.

This space has become so much more diverse, with guests using this area to relax and enjoy.

















## TOP DECK - AFT COCKPIT

Private alcove area aft on both port and starboard. Many people seek out a little privacy in their day and so these alcoves are a perfect little nook for having tea or a snack while reading your book in your own space.







## TOP DECK - RESTAURANT

The restaurant's story is told through the medium of taste, smell and sight of panoramic views.

Within the privacy of the dining area, you are free to relax and enjoy the space. The elevated view overlooking the sea is bound to impress. Beautiful natural teak wood guided through the restaurant and stylishly modern finish to the bar, this is a beautiful restaurant that can accommodate up to 22 guests for breakfast, lunch or dinner.























The interior kitchen design is made with care and consideration offering modern technology and space, opening the door to a world of design possibilities.

Created to suit the most specific of customers requirements and space, giving the best use in most convenient way possible.

Smart storage includes deep drawers, hidden island cooling trays, multiple stations, plenty of storage and plenty shelving.



## MAIN ACCOMODATION DECK - CABINS

Its easy to be won over by the pleasures of the wall to wall window that leads to a private step-out veranda, but it is the view that catches the eye and conveys a sense of infinity across the sea.

The modern luxury accommodations are premium grade cabins in space and amenities, which are tech-friendly with Wi-Fi.

Options of twin King-size beds, TV and phone, safe, personal air-conditioning, private en-suite, bathrobes and a hairdryer and of course a working desk area.

















Each Cabin has an open area balcony, something not on your average boat, with enough room to sit and stretch out while enjoying the ocean sounds and the scenic views.

The private balconies are furnished with chairs and tables, so guests can enjoy ocean views and breezes while they relax and read, chat or enjoy a snack. Balconies are covered with an adjustable bimini for shade through out the day. The balcony's windows are floor-ceiling and wall-to-wall, ideal for scenic cruising.







DIAMOND













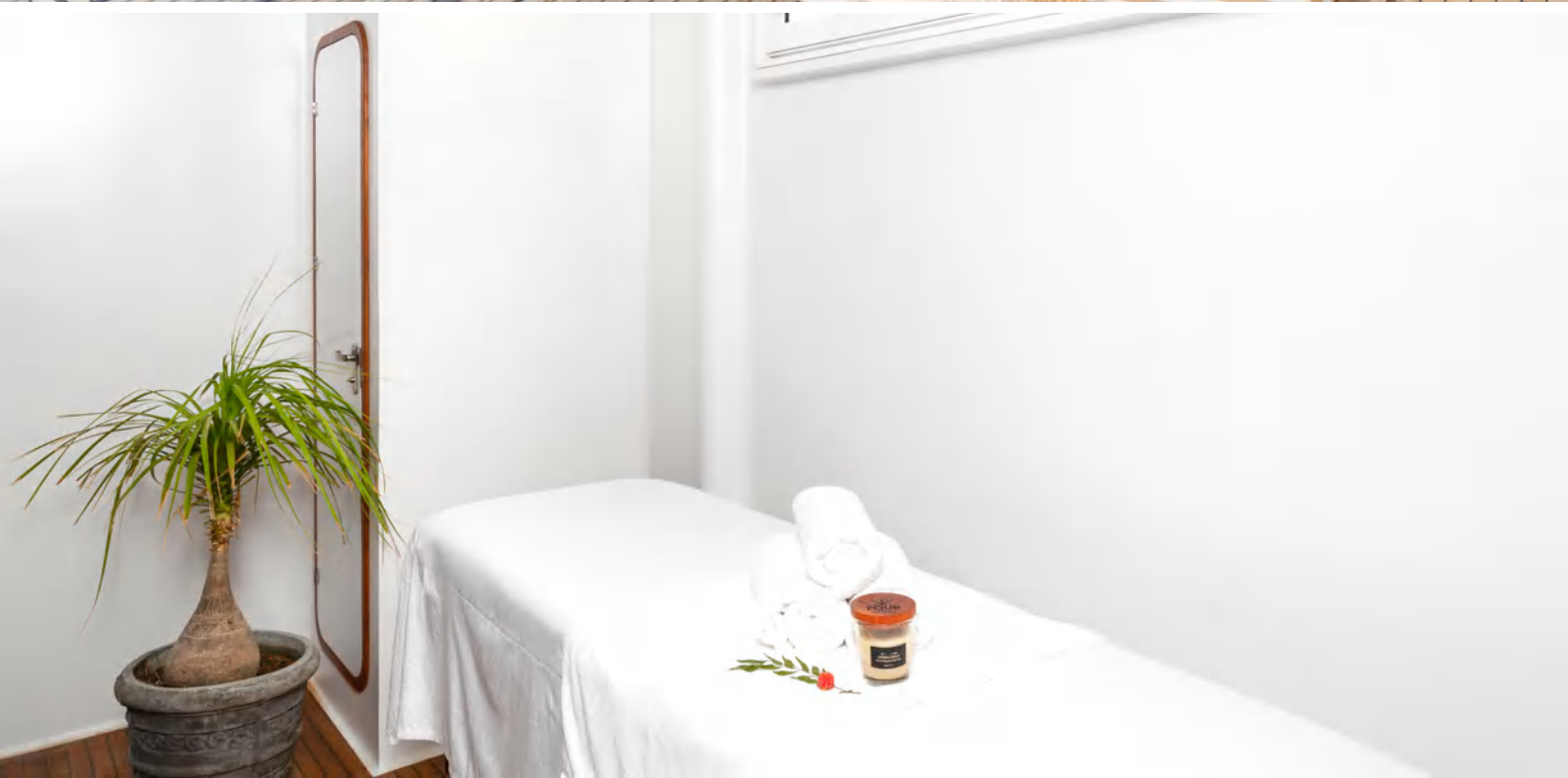
## MAIN DECK

When you are on the boat, you are free from distractions. This is made easy with the different lounging areas around the boat.

The massage rooms have an appealing and comfortable space, which is essential for an optimal massage experience, and reflects the tranquillity and peace of being on the sea.











## LOWER DECK

Aft of the lower deck there are two further guest cabins, both are a very spacious family rooms with a double and a single, along with wardrobe storage and en-suite bathroom with shower.

The incredibly spacious open-plan rooms are the largest cabins onboard.





*"Sailing takes me away to where I've always heard it could be."*





The Ocean Diamond designers have taken the initiative to provide exceptionally accommodating crew spaces before any regulatory agency requires it.

The boats are larger, and therefore easier to layout in a professional way. Two spacious four berth cabins, a two berth engineers cabin and the captains quarters, all en suite and air conditioned.





## BAUDOUIN 6W105M

Bore and stroke	105 x 130 mm
Number of cylinders	6 in line
Total displacement	6.75 litres
Compression ratio	18/1
Engine rotation (ISO 1204 standard)	CCW
Idle speed	650 rpm
Weight (without water & oil)	810 kg
Flywheel housing	SAE 3
Flywheel	SAE 11.5"













## LIFE ONBOARD OF OCEAN DIAMOND

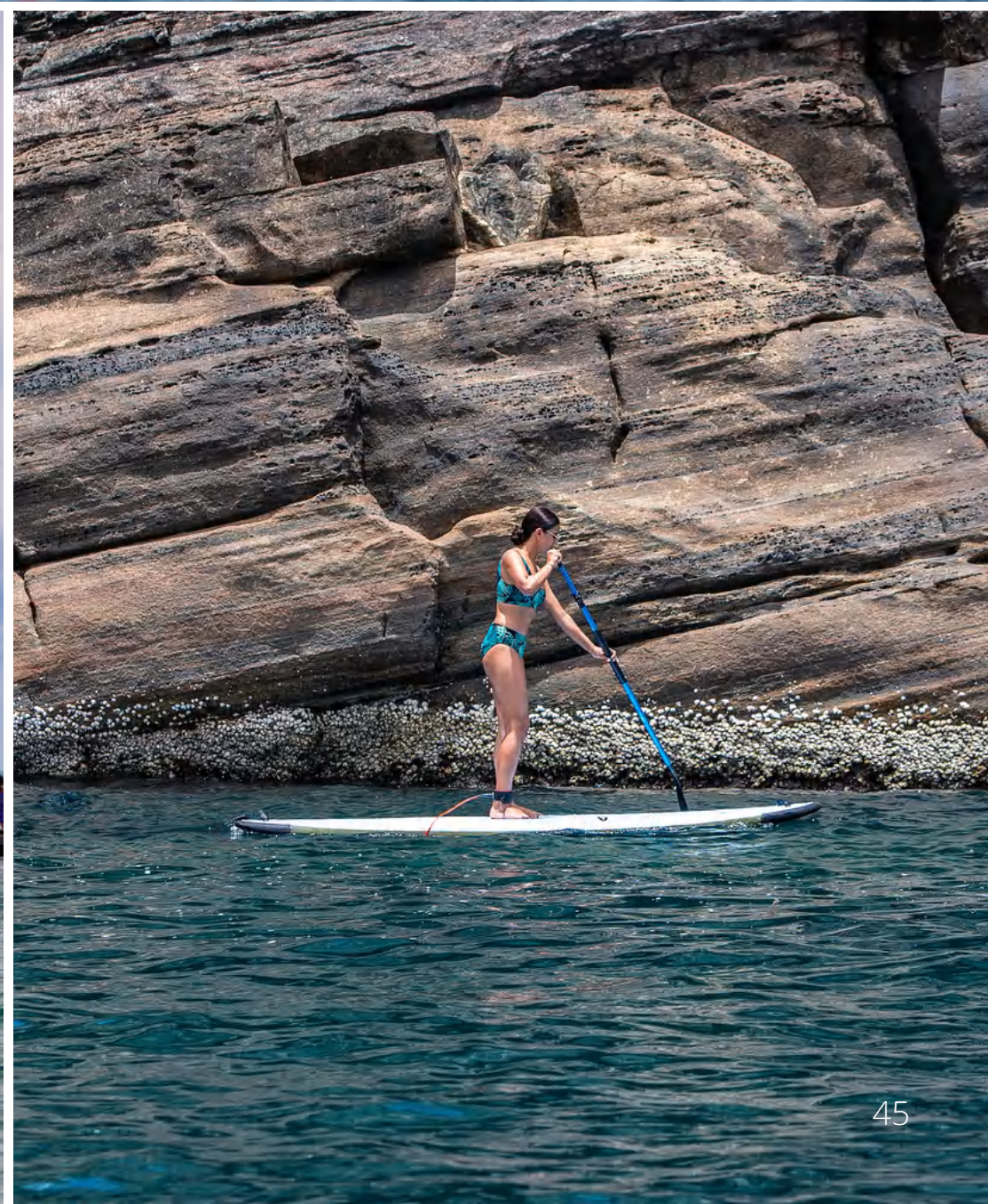
Life onboard is unique, and a unforgettable experience.

There is a wonderful spectrum of enriching activities that awaits you on board, an opportunity to taste a variety of exquisite dishes. Marvel at the continuously changing scenery, from the bistro serving a tempting array of cocktails, spirits, wine and beer. Sail away from the harbour and catch the winds to the quiet and peaceful place upon the sea, for the future is in the hands of those who explore.

To conquer the local and international market, we built and launched our game-changing catamarans equipped with 10 rooms, offering a safe and stable platform where "your boat is your hotel, your principal way of transportation, and an ideal safe and comfortable platform for water sport, fine-dining and entertainment to enjoy the marine lifestyle experience".

























## SIDE VIEW

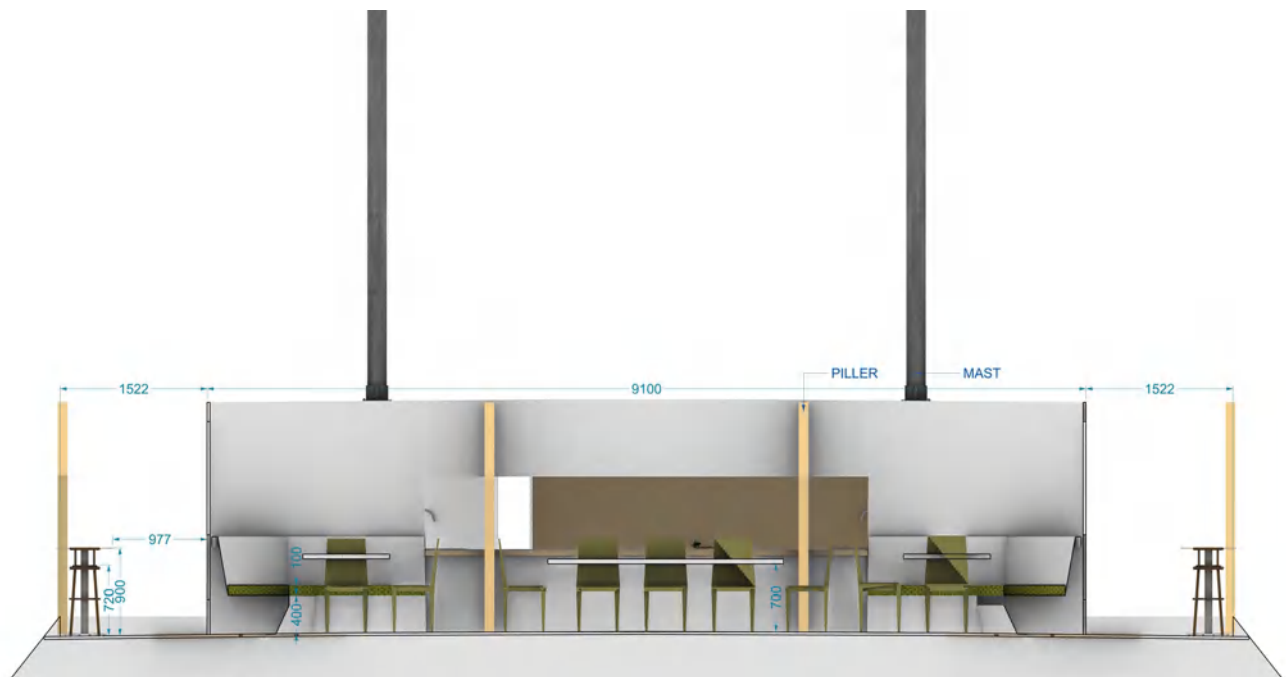




This detailed floor plan illustrates the restaurant's layout, including furniture placement and area calculations. The plan is divided into several functional zones:

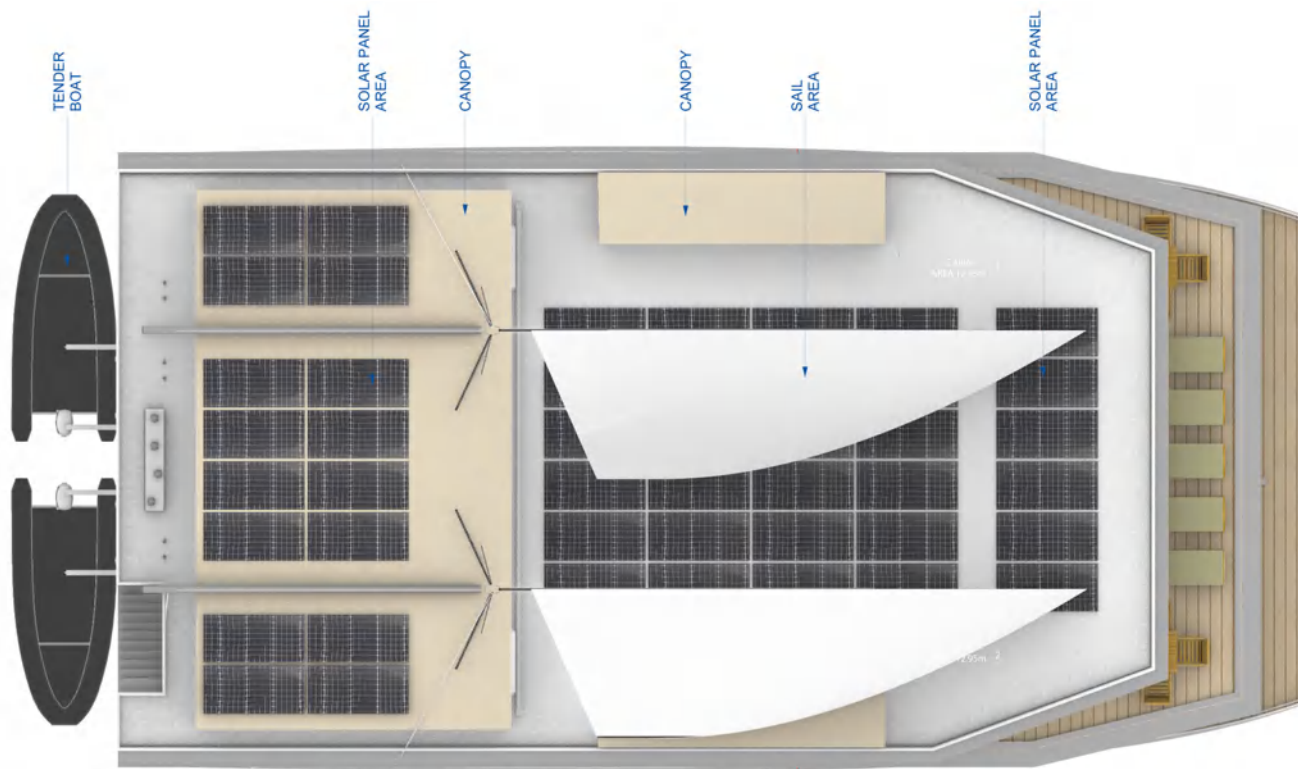
- Service and Storage Areas (Left):** Includes a 'WAST HIGH STORAGE UNIT', 'GAS BOTTLE STORAGE', 'WASH AREA', 'SEATING BOOTHS', 'GALLEY', and 'MAST'. The 'FLOOR AREA' for this section is 60.97m².
- Restroom Area (Top Center):** Labeled 'RESTURENT AREA'.
- Main Dining Area (Center):** Features a large rectangular table labeled 'B' and a curved bar area. The 'FLOOR AREA' for this section is 86.35m².
- Bar and Seating (Right):** Includes a 'BAR', 'COCKTAIL TABLE', 'COFFEE TABLE', and 'SUNBED'. The 'FLOOR AREA' for this section is 65.71m².
- Additional Seating (Bottom Left):** A section labeled 'C' with a 'FLOOR AREA' of 22.05m².

The plan also shows various dimensions and furniture placement, including tables, chairs, and storage units. The overall layout is designed to maximize space efficiency and provide a comfortable dining environment.

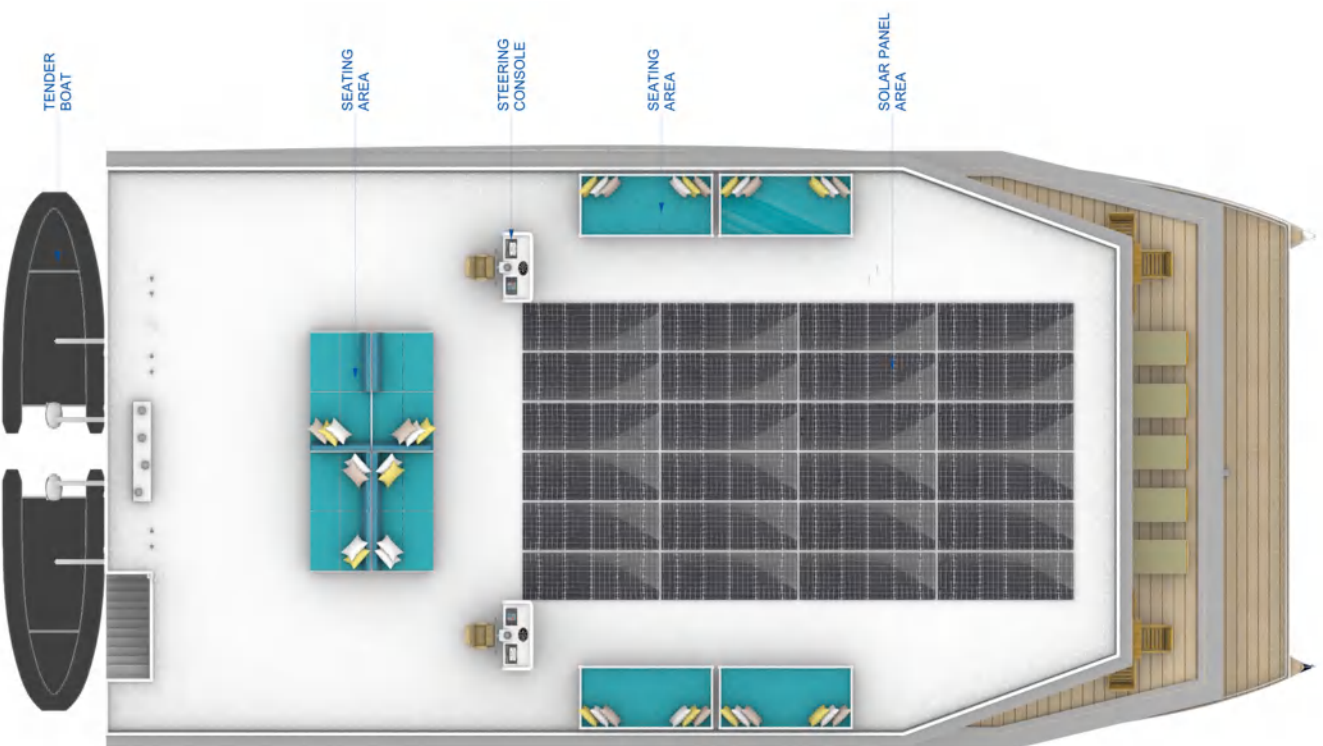




## TOP VIEW



## ROOF ARRANGEMENT



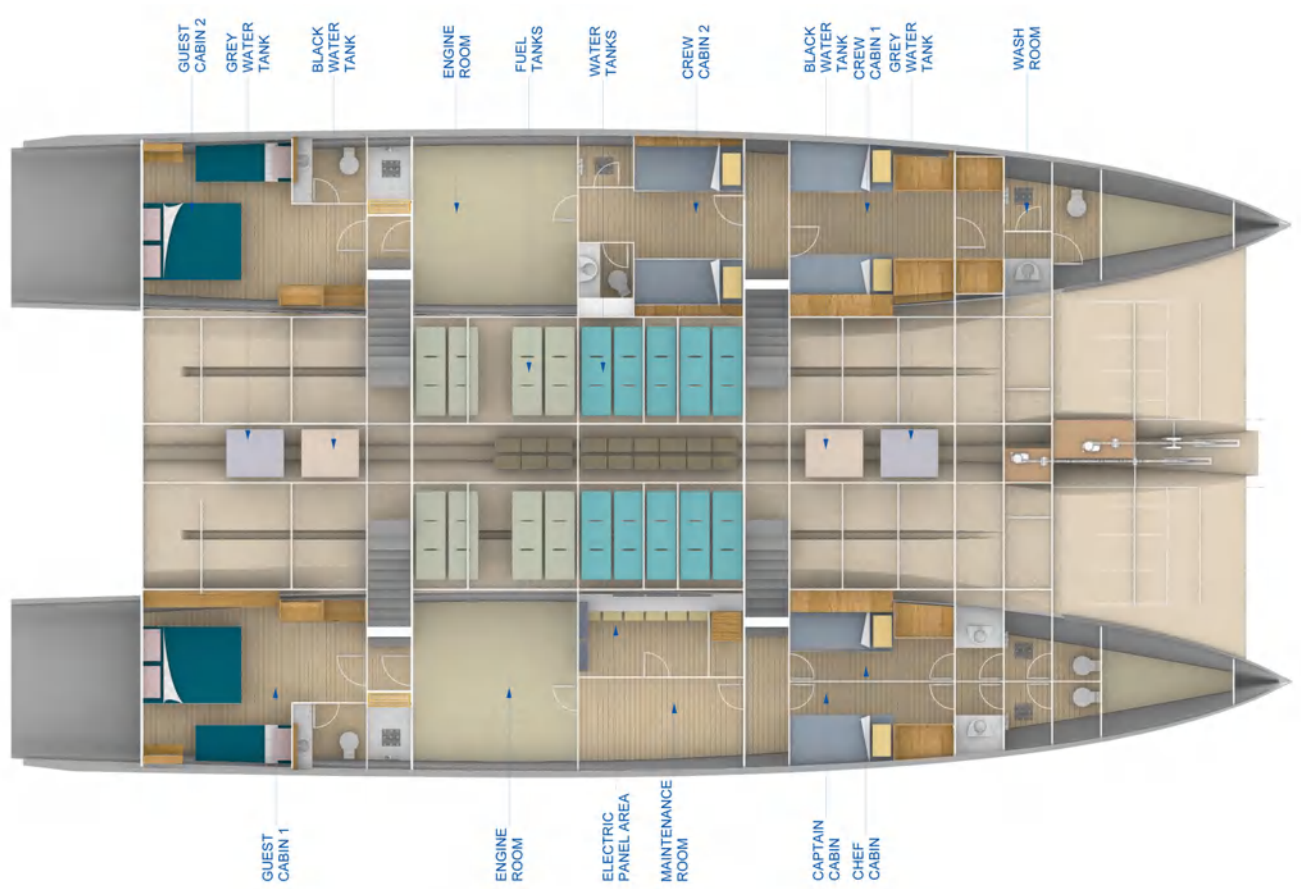


DECK ARRANGEMENT





# HULL ARRANGEMENT



















## OCEAN DIAMOND

### OCEAN DIAMOND - EXPLORER

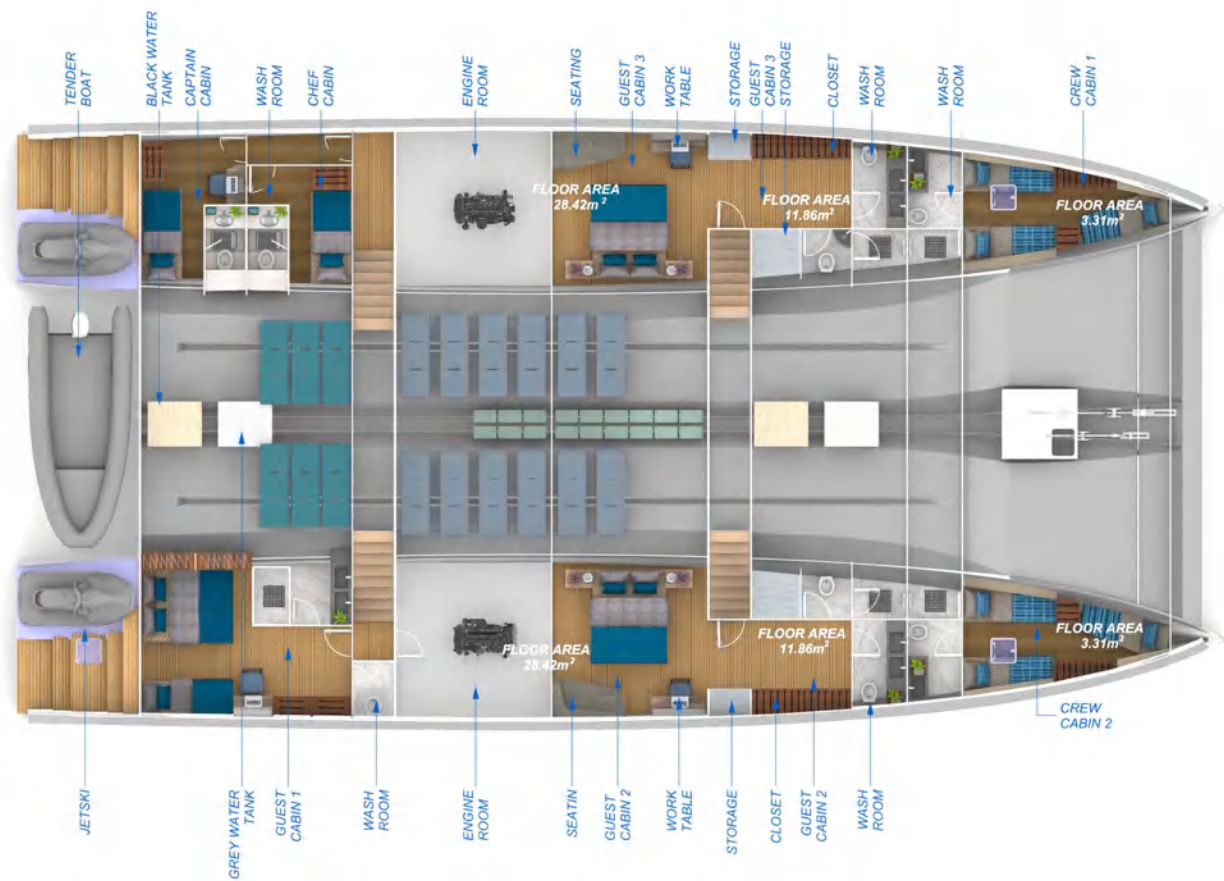
Model	Ocean Diamond 27
Builder	BAFF Polymech (Pvt) Ltd.
Architects	Sabrosa Rain
Cabin details:	
4 Cabins	8 Passengers
5 Cabins	11 Passengers
6 Cabins	14 Passengers
Overall Length	26.6 m
Maximum beam	13.5 m
Draft	1.4 m
Air draft	7.43 m
Light displacement	76 T
Depth	2.8 m
Engine	Cummins QSB7, 353 Kw/ 480mHp
Fuel tank	16 x 600 L (9600 L)
Fresh water tank	6 x 600 L (3600 L)
Black water tank	8 x 50 L (400 L)
Electrical installation	24 Volt & 230 Volt
Battery capacity	18 x 220 Ah
Floor	Teak
Diving ladder	01
Tender boat	01
Anchor	2 x 75 kg
Solar panel area	82 sqm



DECK ARRANGEMENT

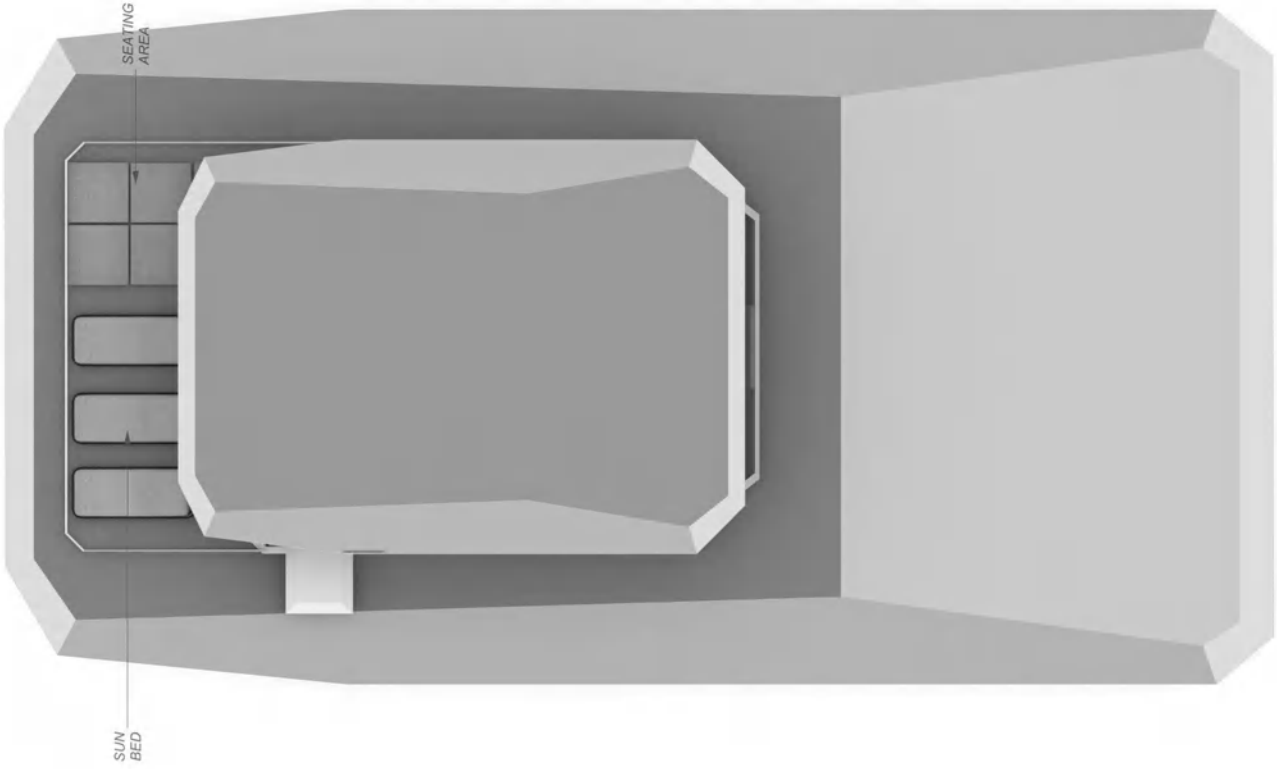


HULL ARRANGEMENT





ROOF ARRANGEMENT



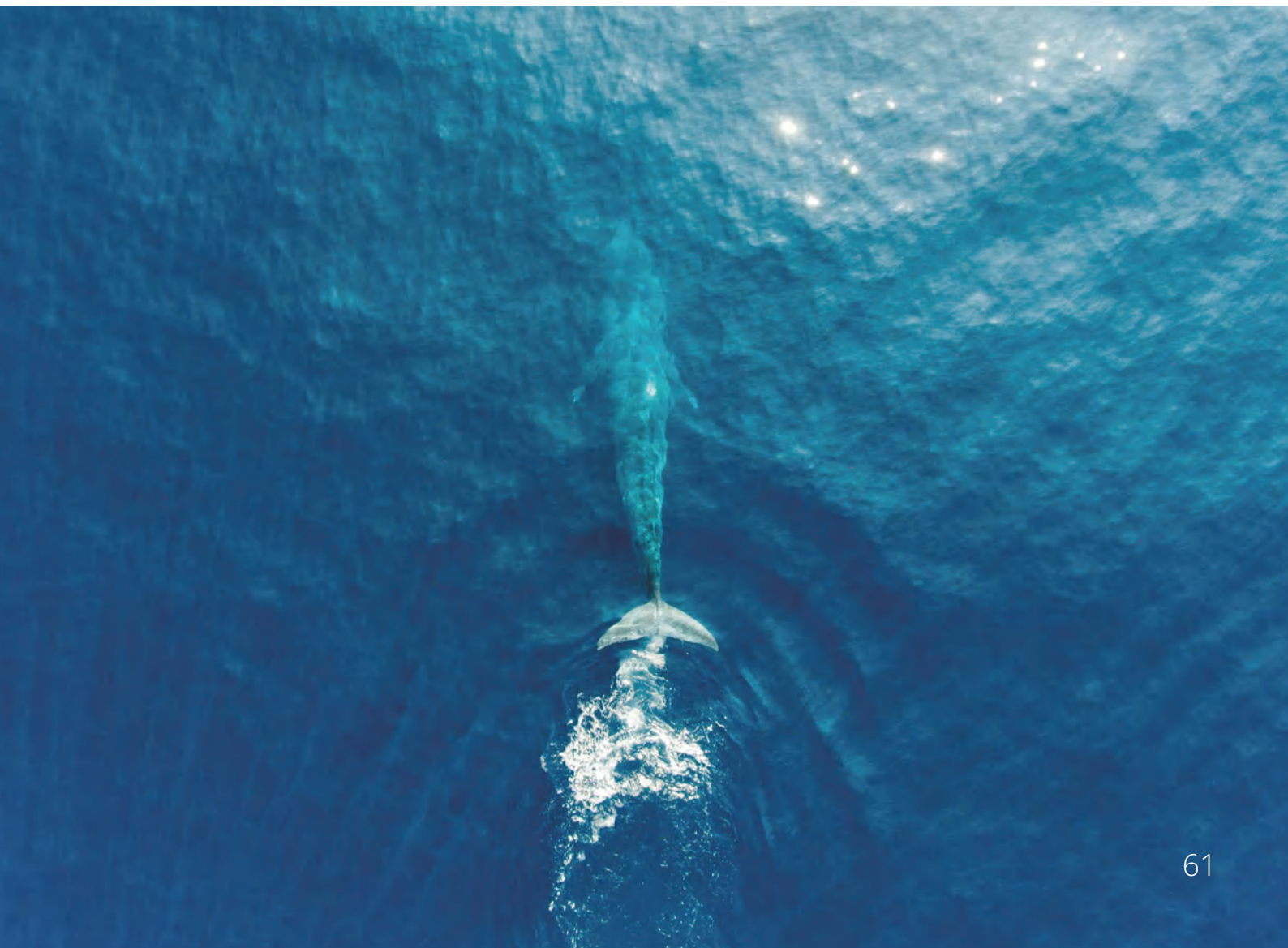


## TOP LEVEL -BUILT WITH SOLAR INGENUITY

Our oceans and waterways, their marine life and the shores surrounding them are in peril. The power of the sun for sustainable sailing is the innovative journey towards sustainability with Ocean Diamond: 110 square meters of 48 sleek solar panels.

Thinking Beyond Plastic and designing with eco-friendly features, including more solar panels, LED lighting and onboard desalination system for drinking water.

As the leading yacht designers in Sri Lanka, creating awareness towards more sustainable options is always at the forefront of our values.



## DESIGN YOUR OWN SPACE

---

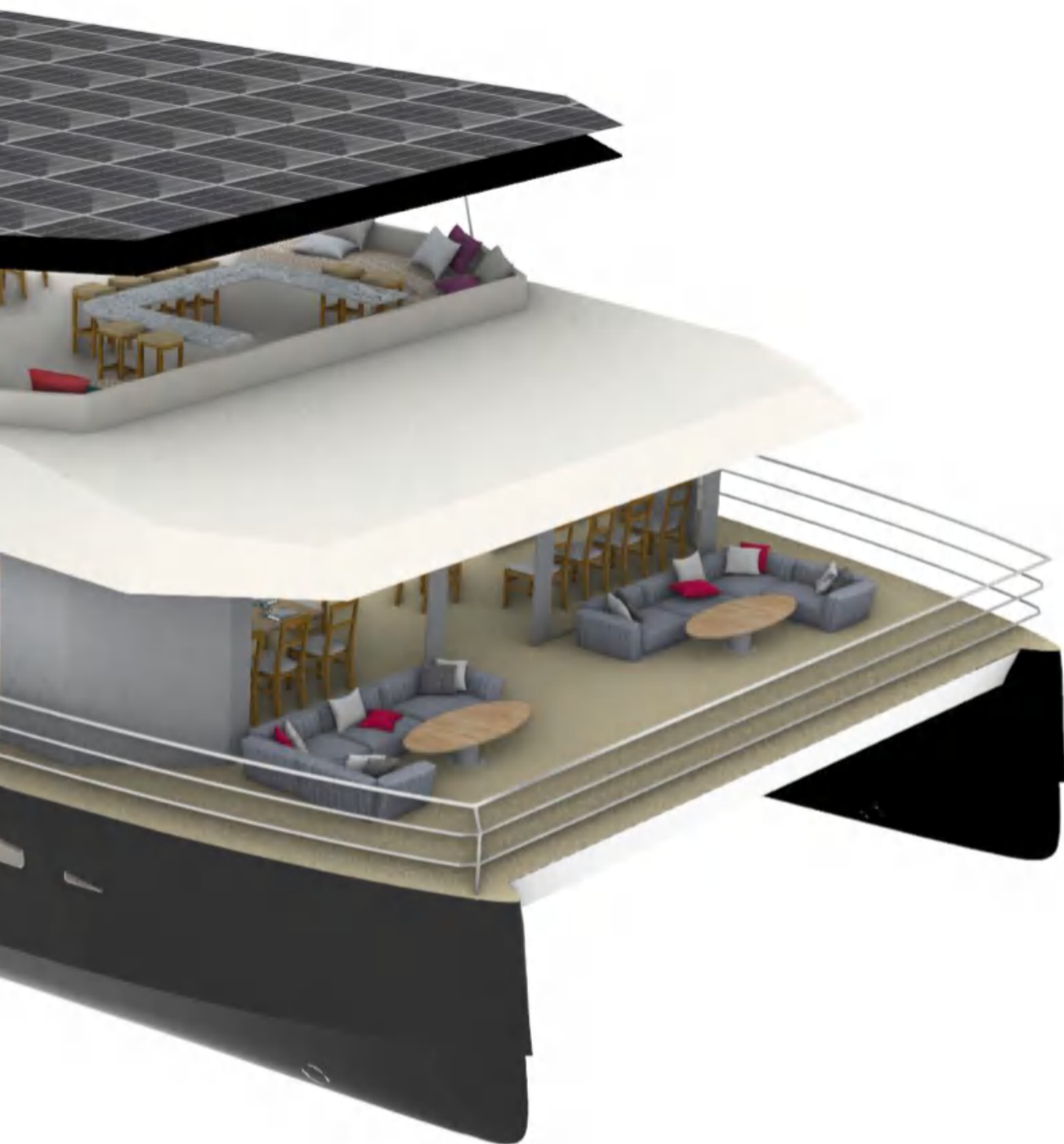
16 square meters of modifiable space that you can personalise according to your tastes in the Starboard aft cabin - lower level

- Wine cellar
- Spa/massage room
- Movie room
- Office space
- Storage room
- Guest room













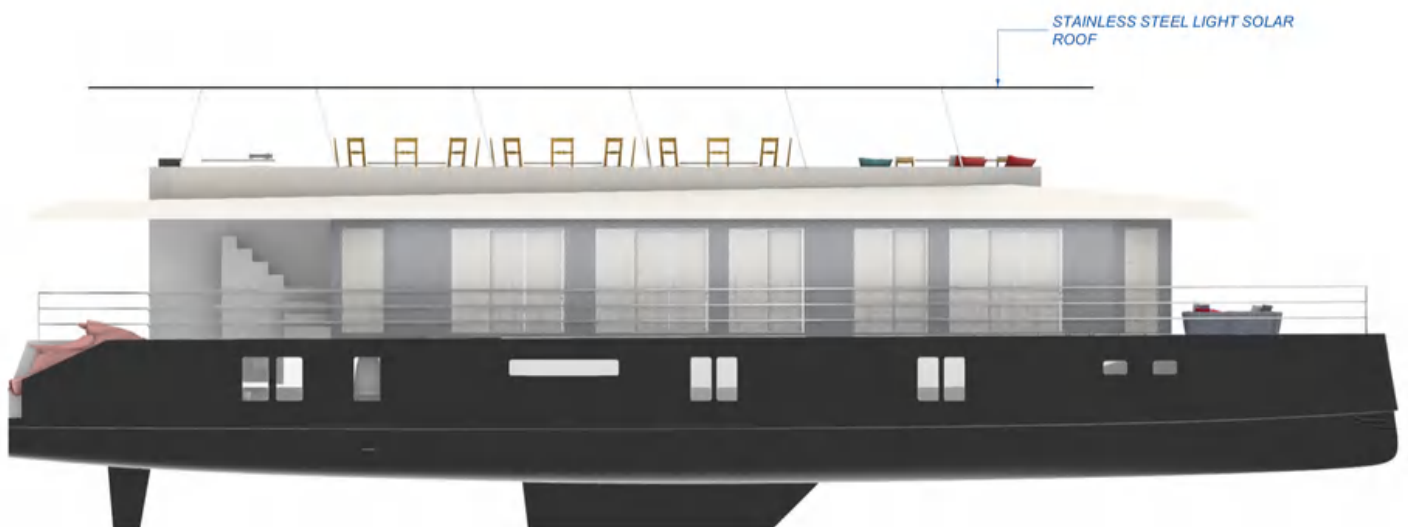
OCEAN DIAMOND

## OCEAN DIAMOND - EXPERIENCE

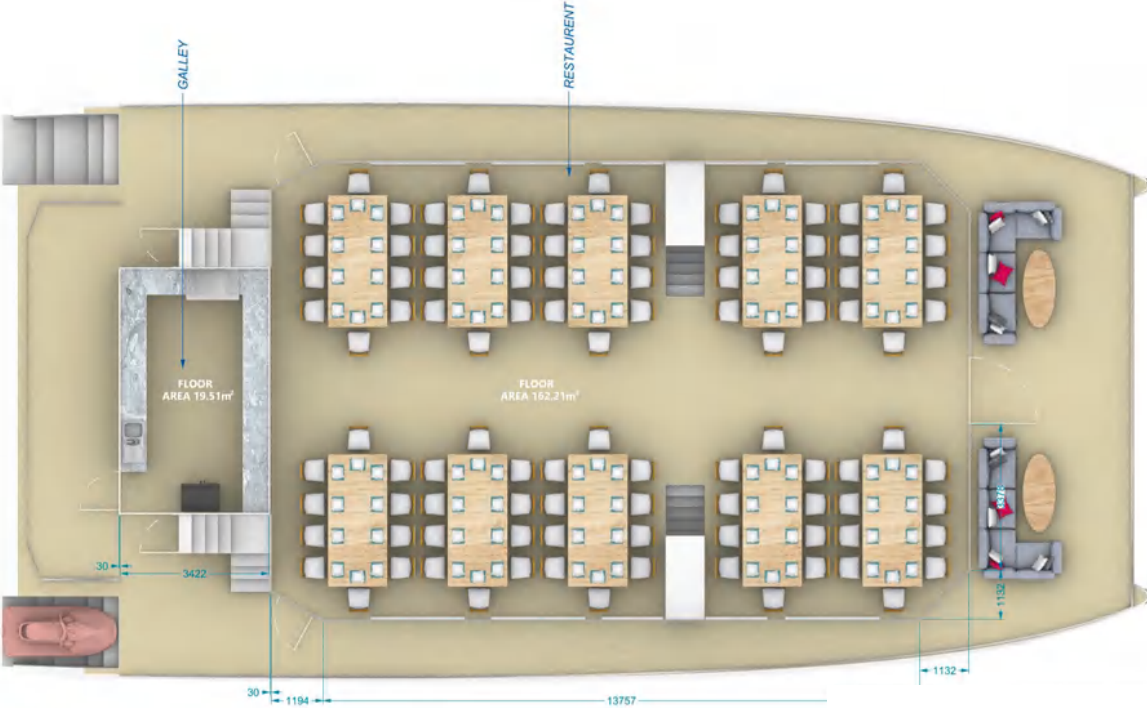
---

Our design team is currently working on developing a day charter version of the Ocean Diamond: Ocean Diamond Experience.

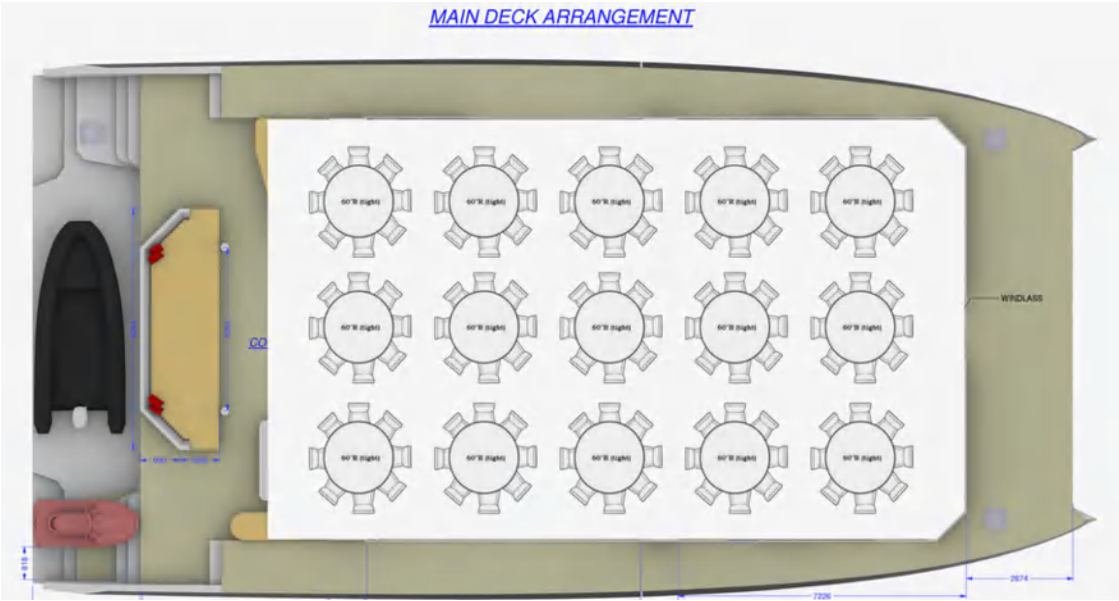
The day charter version will be able to accommodate 150 guests, for day charter, corporate events, weddings etc



MAIN DECK

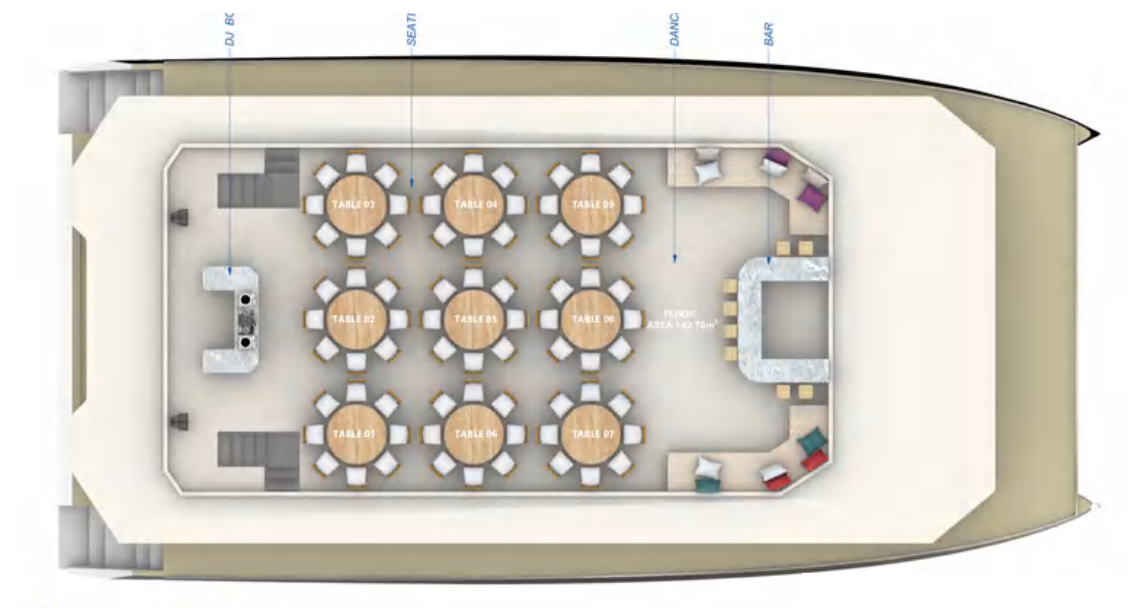
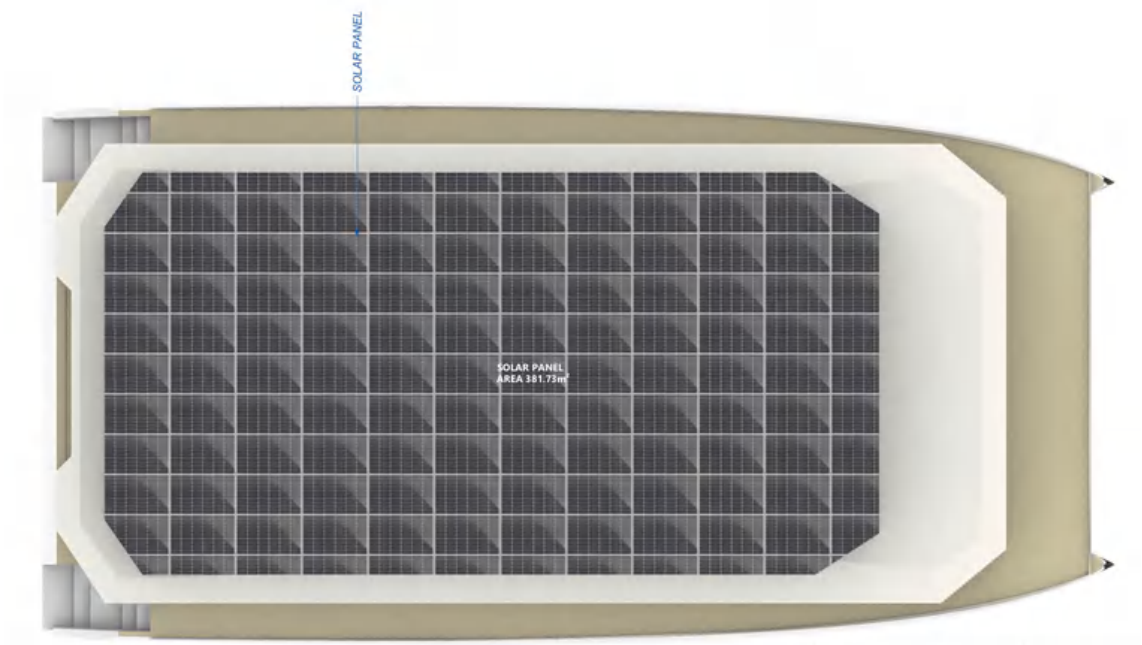


DETAIL  
- RESTAURENT SEATING CAPACITY ( 10 X 10 )

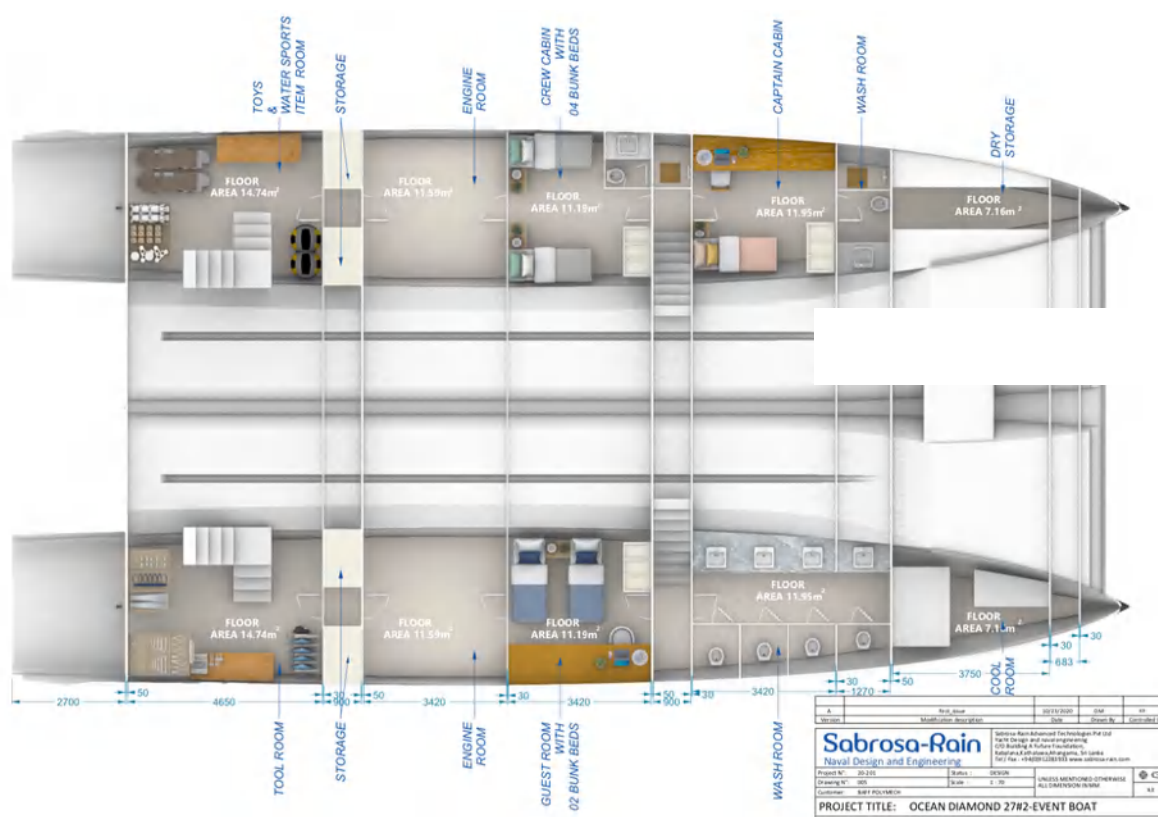




UPPER LEVELS



LOWER LEVEL





**"Certainly, the only way to know if you like it is to try it,  
Blue Seas and Blue Skies"**







# SEA LEISURE

## YACHTING GROUP

MANUFACTURING • LEISURE • VENTURES

[info@slyg.global](mailto:info@slyg.global)

+94 702 713 007

Kabalana, Kathaluwa, Ahangama, Sri Lanka

[www.slyg.global](http://www.slyg.global)

