





SEA LEISURE

YACHTING GROUP

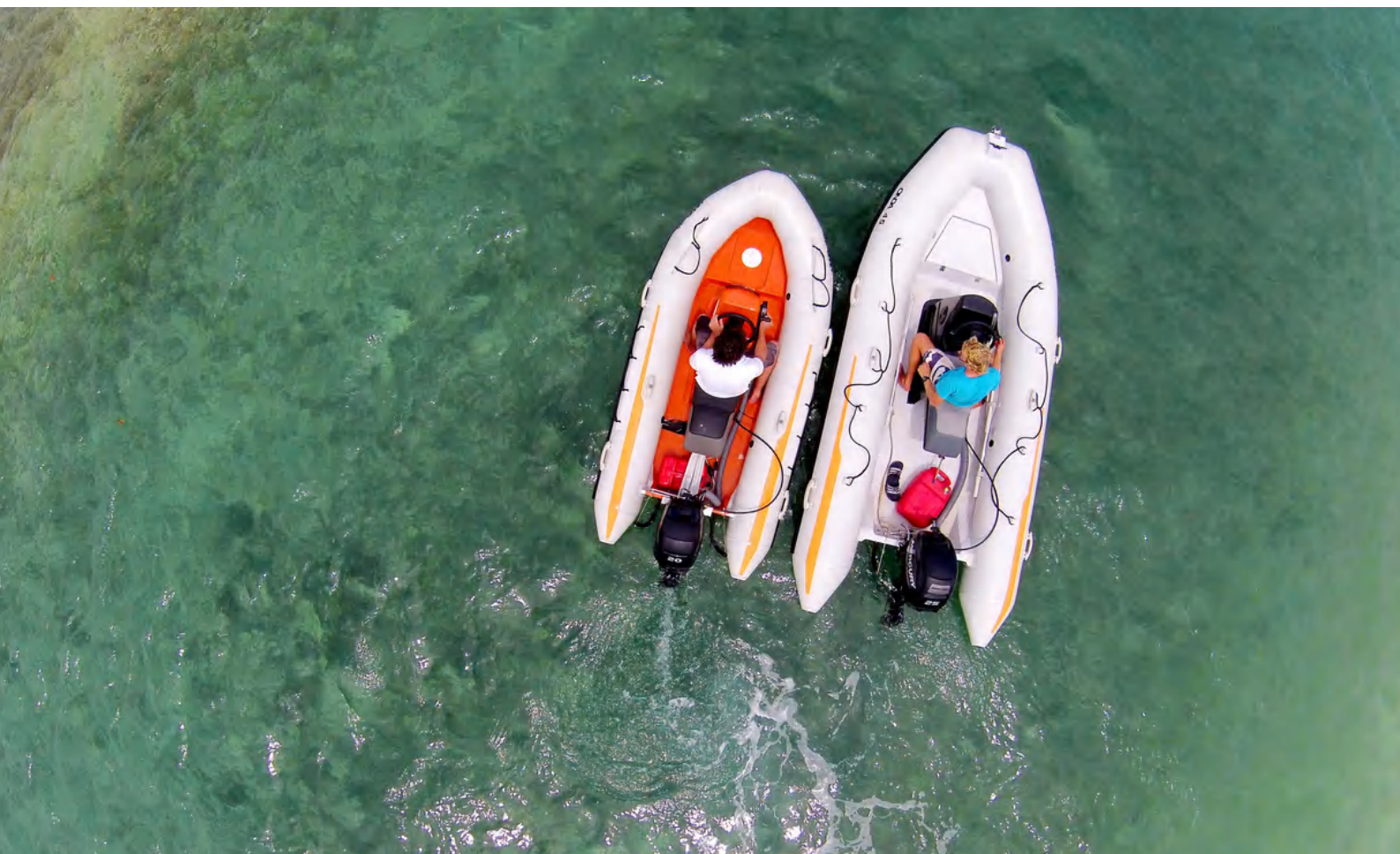
MANUFACTURING • LEISURE • VENTURES



Enjoy the endless possibilities of enjoying the sea with the Pulse high-quality Rigid Inflatable Boat from 3.5 to 8.5 m. It's the perfect way to enrich your marine experience, explore the seas and to have fun with family and friends. Everything was designed and made in Sri Lanka by Pulse Marine.

OUR MODELS

- PULSE 35 LITE
- PULSE 35 SPORT
- PULSE 45 LITE
- PULSE 45 SPORT
- PULSE 55 LITE
- PULSE 55 SPORT
- PULSE 55 PASSENGER
- PULSE 65 LITE
- PULSE 65 SPORT
- PULSE 65 PASSENGER
- PULSE 65 DIVE
- PULSE 85 LITE
- PULSE 85 SPORT
- PULSE 85 PASSENGER
- PULSE 85 DIVE
- PULSE DELUXE (custom versions)









pulse **35**



DIMENSIONS (m)

Overall length inflated	3.34
Overall length deflated	2.84
Overall width inflated	1.46
Overall width deflated	1.06
Inside length	2.43
Inside width	0.73
Height inflated	0.72
Height deflated	0.38
Buoyancy tube diameter	0.4
Number of air chambers	3
Overall dry weight	90 kg

OUTBOARD MOTOR DATA

Shaft	short 15 inch
Minimum recommended power (HP)	2.5 HP
Maximum recommended power (HP)	20 HP
Maximum power allowed (HP)	20 HP
Maximum speed (knots)	25 knots

CAPACITY

Passengers	5 persons
Maximum payload	350 kg

INCLUDED IN THIS MODEL

- 1 x fibreglass hull and deck with integrated anti-slip texture
- 1 x inflatable bellow in 3 air chambers with separate inflation valves
- 3 x overpressure valves
- 1 x Orca-hypalon air tube
- 4 x rubber handles, 2 on each side
- 3 x SS medium size lifting pad eyes
- 1 x set of safety ropes
- 1 x heavy duty SS large pad eye on front of the hull
- 1 x plastic screw type hull drainage plug on transom
- 1 x engine mount bracket
- 1 x set (left/right) aluminium/plastic paddles with fixing bracket
- 1 x manual air pump

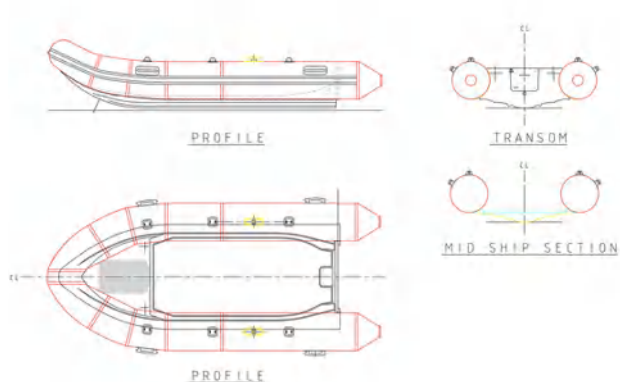
ADDITIONAL ITEMS NEEDED

Outboard Motor (OBM)

Our team will guide you with their expertise in choosing the right engine for your boat

ADD-ON OPTIONS

- Teak deck finishing
- 1 x textile full boat cover
- Road trailer
- Beach trailer
- Roll up ladder
- Anchor + anchor chain
- Chains & ropes
- Long shaft engine mount bracket adapter
- 1 x galvanized steel anchor
- 2 x towing eye pad on transom
- 1 x set (left/right) aluminium paddles with fixing bracket



All the information on this leaflet are not contract binding and are an indication of the offer

DIMENSIONS (m)

Overall length inflated	3.34
Overall length deflated	2.84
Overall width inflated	1.46
Overall width deflated	1.06
Inside length	2.43
Inside width	0.73
Height inflated	0.72
Height deflated	0.38
Buoyancy tube diameter	0.4
Number of air chambers	3
Overall dry weight	110 kg

OUTBOARD MOTOR DATA

Shaft	short 15 inch
Minimum recommended power (HP)	15 HP
Maximum recommended power (HP)	20 HP
Maximum power allowed (HP)	25 HP
Maximum speed (knots)	24 knots (depending on the load)

CAPACITY

Passengers	3 adults/2 adults + 2 children
Maximum payload	300 kg

INCLUDED IN THIS MODEL

- 1 x fibreglass hull and deck with integrated anti-slip texture
- 1 x inflatable bellow in 3 air chambers with separate inflation valves
- 3 x overpressure valves and 1 x Orca-hypalon air tube
- 4 x rubber handles, 2 on each side
- 3 x SS medium size pad eyes and 1 x heavy duty SS large pad eye on front of the hull
- 1 x plastic screw type hull drainage plug on transom
- 1 x engine mount bracket
- 1 x set (left/right) aluminium/plastic paddles with fixing bracket
- 1 x manual air pump and 1 x set of safety ropes
- 1 x SS rear roll bar
- 1 x steering console with storage under the front seat
- 1 x stand seat with roll cushion and 1 x backseat with storage

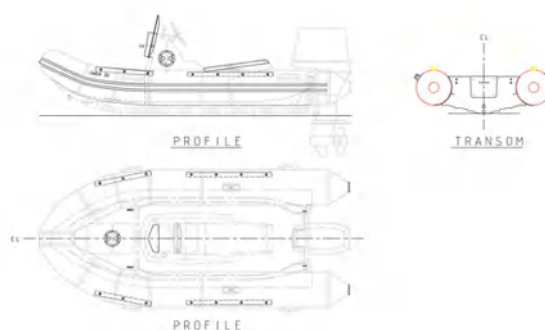
ADDITIONAL ITEMS NEEDED

- Outboard Motor (OBM) with remote steering and throttles
- Our team will guide you with their expertise in choosing the right engine for your boat*

ADD-ON OPTIONS

- Teak deck finishing
- 1 x textile full boat cover
- Road trailer
- Beach trailer
- Roll up ladder
- Anchor + anchor chain
- Chains & ropes
- Long shaft engine mount bracket adapter
- Battery package
- 2 x towing pad eye on transom
- 1 x set (left/right) aluminium paddles with fixing bracket
- 1 x stainless steel bimini
- Rolled up canopy

All the information on this leaflet are not contract binding and are an indication of the offer





pulse 45



DIMENSIONS (m)

Overall length inflated	4.50
Overall length deflated	3.65
Overall width inflated	1.96
Overall width deflated	1.23
Inside length	3.50
Inside width	0.96
Height inflated	0.96
Height deflated	0.55
Buoyancy tube diameter	0.48
Number of air chambers	3
Overall dry weight	298 kg

OUTBOARD MOTOR DATA

Shaft	short 21 inch
Minimum recommended power (HP)	5 HP
Maximum recommended power (HP)	30 HP
Maximum power allowed (HP)	40 HP
Maximum speed (knots)	26 knots (depending on the OBM and load)

CAPACITY

Passengers	6 persons
Maximum payload	450 kg

INCLUDED IN THIS MODEL

- 1 x fibreglass hull and deck with integrated anti-slip texture
- 1 x Orca-hypalon air tube
- 1 x inflatable bellow in 3 air chambers with separate inflation valves
- 3 overpressure valves
- 1 x anchor locker with hatch
- 4 x rubber handles, 2 on each side
- 3 x SS medium size lifting pad eyes
- 1 x heavy duty SS large pad eye in front of the hull
- 1 x engine mount bracket
- 1 x plastic screw type hull drainage plug on transom
- 1 x set of safety ropes
- 1 x manual air pump

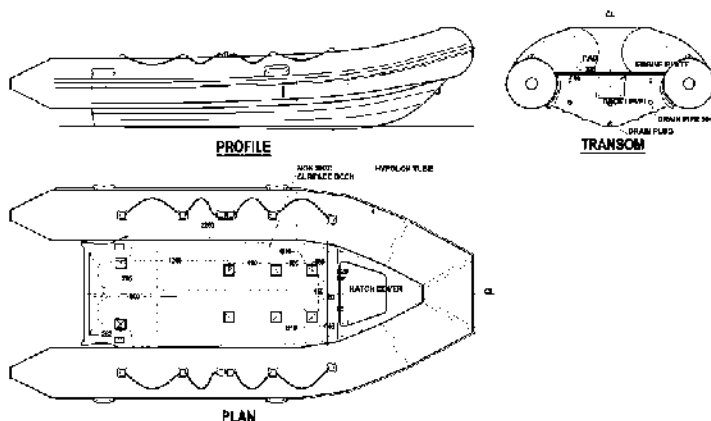
ADDITIONAL ITEMS NEEDED

Outboard Motor (OBM)

Our team will guide you with their expertise in choosing the right engine for your boat

ADD-ON OPTIONS

- Teak deck finishing
- 1 x textile full boat cover
- Road trailer
- Beach trailer
- Roll up ladder
- Anchor + anchor chain
- 1 x galvanized steel anchor
- Chains & ropes
- 2 x Towing pad eye on transom
- Rolled up canopy



DIMENSIONS (m)

Overall length inflated	4.50
Overall length deflated	3.65
Overall width inflated	1.96
Overall width deflated	1.23
Inside length	3.50
Inside width	0.96
Height inflated	0.96
Height deflated	0.55
Buoyancy tube diameter	0.48
Number of air chambers	3
Overall dry weight	298 kg

OUTBOARD MOTOR DATA

Shaft	short 21 inch
Minimum recommended power (HP)	5 HP
Maximum recommended power (HP)	30 HP
Maximum power allowed (HP)	40 HP
Maximum speed (knots)	26 knots (depending on the OBM and load)

CAPACITY

Passengers	6 persons
Maximum payload	450 kg

INCLUDED IN THIS MODEL

- 1 x fibreglass hull and deck with integrated anti-slip texture
- 1 x Orca-hypalon air tube
- 1 x inflatable bellow in 3 air chambers with separate inflation valves
- 3 overpressure valves
- 1 x anchor locker with hatch
- 4 x rubber handles, 2 on each side
- 3 x SS medium size lifting pad eyes
- 1 x heavy duty SS large pad eye in front of the hull
- 1 x engine mount bracket
- 1 x plastic screw type hull drainage plug on transom
- 1 x set of safety ropes
- 1 x manual air pump
- 1 x SS rear roll bar
- Jockey seat with steering console

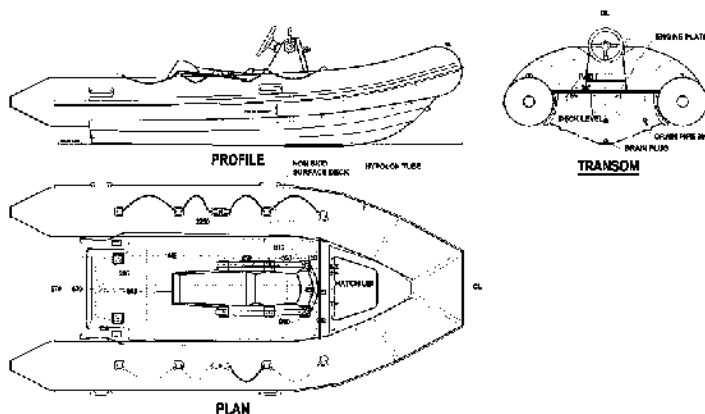
ADDITIONAL ITEMS NEEDED

Outboard Motor (OBM)

Our team will guide you with their expertise in choosing the right engine for your boat

ADD-ON OPTIONS

- Teak deck finishing
- 1 x textile full boat cover
- Road trailer
- Beach trailer
- Roll up ladder
- Anchor + anchor chain
- Battery Package
- 1 x galvanized steel anchor
- Chains & ropes
- 2 x Towing pad eye on transom
- 1 x Stainless steel bimini
- Rolled up canopy





pulse **SS**



DIMENSIONS (m)

Overall length inflated	5.40
Overall length deflated	4.60
Overall width inflated	2.30
Overall width deflated	1.70
Inside length	4.51
Inside width	1.48
Height inflated	depends on options mounded
Height deflated	depends on options mounded
Buoyancy tube diameter	0.48
Number of air chambers	5
Overall dry weight	550 kg

OUTBOARD MOTOR DATA

Shaft	short 21 inch
Minimum recommended power (HP)	40 HP
Maximum recommended power (HP)	60 HP
Maximum power allowed (HP)	80 HP
Maximum speed (knots)	26 knots (depending on the OBM and load)

CAPACITY

Passengers	9 persons
Maximum payload	1300 kg

INCLUDED IN THIS MODEL

- 1 x fiberglass hull and deck with integrated anti-slip texture
- 1 x Orca-hypalon air tube
- 1 x inflatable bellow with 5 chambers in separate inflation valves and 5 x overpressure valves
- 1 x anchor locker with hatch
- 6 x rubber handles, 3 on each side
- 1 x galvanized steel anchor, 5m chain, 20 m rope
- 4 x SS medium size lifting pad eyes and 1 x heavy duty SS large pad eye in front of the hull
- 1 x engine mount bracket and 1 x set of safety ropes
- 1 x plastic screw type hull drainage plug on transom
- 1 x set of aluminum paddles
- 1 x manual air pump
- 2 x deck water rear evacuation hose
- 1 x hull water evacuation plug

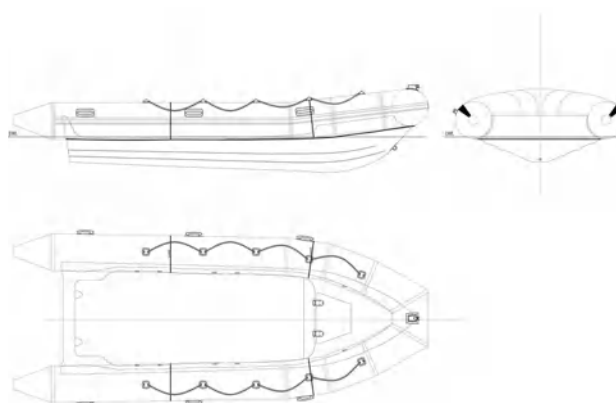
ADDITIONAL ITEMS NEEDED

Outboard Motor (OBM)

Our team will guide you with their expertise in choosing the right engine for your boat

ADD-ON OPTIONS

- Teak deck finishing
- SS roll bar with waterski rope eyelet
- 1 x textile full boat cover
- Road trailer
- Beach trailer
- Roll up ladder
- Anchor + anchor chain
- Chains & ropes
- 2 x towing pad eye on transom
- Rolled up canopy
- 1 x steering console with storage under front seat



All the information on this leaflet are not contract binding and are an indication of the offer

DIMENSIONS (m)

Overall length inflated	5.40
Overall length deflated	4.60
Overall width inflated	2.30
Overall width deflated	1.70
Inside length	4.51
Inside width	1.48
Height inflated	depends on options mounted
Height deflated	depends on options mounted
Buoyancy tube diameter	0.48
Number of air chambers	5
Overall dry weight	400 kg

OUTBOARD MOTOR DATA

Shaft	short 21 inch
Minimum recommended power (HP)	40 HP
Maximum recommended power (HP)	60 HP
Maximum power allowed (HP)	80 HP
Maximum speed (knots)	26 knots (depending on the OBM and load)

CAPACITY

Passengers	9 persons
Maximum payload	1300 kg

INCLUDED IN THIS MODEL

- 1 x fiberglass hull and deck with integrated anti-slip texture
- 1 x Ocra-hypalon air tube
- 1 x inflatable bellow with 5 chambers in separate inflation valves and 5 x overpressure valves
- 1 x anchor locker with hatch and 1 x galvanized steel anchor, 5m chain, 20 m rope
- 6 x rubber handles, 3 on each side
- 4 x SS medium size lifting eye pads and 1 x heavy duty SS large pad eye in front of the hull
- 1 x engine mount bracket and 1 x plastic screw type hull drainage plug on transom
- Jockey seat with steering console
- 1 x set of safety ropes and 1 x set of aluminum paddles
- 1 x manual air pump and 2 x deck water rear evacuation hose
- 1 x hull water evacuation plug and 1 x 1 x SS rear roll bar
- 1 x stand seat with roll cushion and 1 x backseat with storage

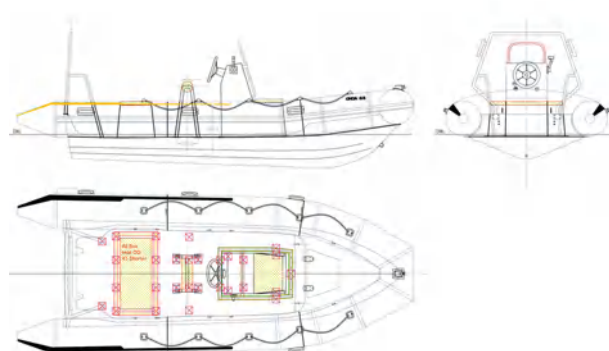
ADDITIONAL ITEMS NEEDED

Outboard Motor (OBM)

Our team will guide you with their expertise in choosing the right engine for your boat

ADD-ON OPTIONS

- Teak deck finishing
- 1 x textile full boat cover
- Road trailer, Beach trailer and Roll up ladder
- Anchor + anchor chain
- Chains & ropes
- Battery package
- 1 x galvanized steel anchor and rope and chain
- 2 x towing pad eye on transom
- 1 x steering console with storage under the front seat
- 1 x stainless steel bimini
- Rolled up canopy
- 1 x stand seat with roll cushion



All the information on this leaflet are not contract binding and are an indication of the offer

DIMENSIONS (m)

Overall length inflated	5.40
Overall length deflated	4.60
Overall width inflated	2.30
Overall width deflated	1.70
Inside length	4.51
Inside width	1.48
Height inflated	depends on options mounted
Height deflated	depends on options mounted
Buoyancy tube diameter	0.48
Number of air chambers	5
Overall dry weight	400 kg

OUTBOARD MOTOR DATA

Shaft	short 21 inch
Minimum recommended power (HP)	40 HP
Maximum recommended power (HP)	60 HP
Maximum power allowed (HP)	80 HP
Maximum speed (knots)	26 knots (depending on the OBM and load)

CAPACITY

Passengers	9 persons
Maximum payload	1300 kg

INCLUDED IN THIS MODEL

- 1 x fiberglass hull and deck with integrated anti-slip texture
- 1 x Ocra-hypalon air tube
- 1 x inflatable bellow with 5 chambers in separate inflation valves and 5 x overpressure valves
- 1 x anchor locker with hatch
- 1 x galvanized steel anchor, 5m chain, 20 m rope
- 6 x rubber handles, 3 on each side
- 4 x SS medium size lifting pad eyes and 1 x heavy duty SS large pad eye in front of the hull
- 1 x engine mount bracket
- 1 x plastic screw type hull draining plug on transom
- 1 x set of aluminum paddles
- 1 x set of safety ropes
- 1 x manual air pump and 2 x deck water rear evacuation hose
- 1 x hull water evacuation plug and 2 x deck water rear evacuation
- 1 x roller bar with ladder and 1 x stainless steel bimini
- 3 x passenger seats
- 1 x deck shower

ADDITIONAL ITEMS NEEDED

Outboard Motor (OBM)

Our team will guide you with their expertise in choosing the right engine for your boat

ADD-ON OPTIONS

- Teak deck finishing
- 1 x textile full boat cover
- Roll up canopy and 1 x stainless steel bimini
- Road trailer, Beach trailer and Roll up ladder
- Anchor + anchor chain, 1 x chain, and rope (as per request)
- Battery package
- 1 x steering console with storage under the front seat
- 2 x towing pad eye on transom
- 1 x set (left/right) aluminum paddles with fixing bracket

All the information on this leaflet are not contract binding and are an indication of the offer



pulse **65**



DIMENSIONS (m)

Overall length inflated	6.48
Overall length deflated	5.50
Overall width inflated	2.54
Overall width deflated	1.80
Inside length	4.97
Inside width	1.52
Height inflated	depends on options mounted
Height deflated	depends on options mounted
Buoyancy tube diameter	0.48
Number of air chambers	5
Overall dry weight	775 kg

OUTBOARD MOTOR DATA

Shaft	short 21 inch
Minimum recommended power (HP)	80 HP
Maximum recommended power (HP)	115 HP
Maximum power allowed (HP)	150 HP
Maximum speed (knots)	30 knots (depending on the OBM and load)

CAPACITY

Passengers	10 persons
Maximum payload	1500 kg

INCLUDED IN THIS MODEL

- 1 x fiberglass hull and deck with integrated anti slip texture
- 1 x Ocra-hypation air tube
- 1 x inflatable bellow with 5 chambers in separate inflation valves and 5 overpressure valves - 1 x anchor locker with hatch
- 1 x galvanized steel anchor, 5m chain, 20 m rope
- 6 x rubber handles, 3 on each side
- 4 x SS medium size lifting pad eyes and 1 x heavy duty SS large pad eye in front of the hull
- 1 x plastic screw type hull drainage plug on transom
- 1 x engine mount bracket
- 1 x set of safety ropes
- 1 x set of aluminum paddles
- 1 x manual air pump and 2 x deck water rear evacuation hose
- 1 x stand seat with roll cushion

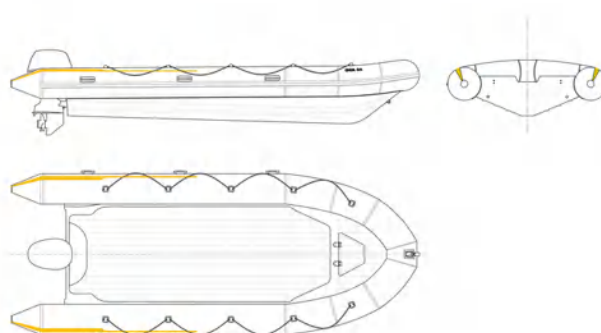
ADDITIONAL ITEMS NEEDED

Outboard Motor (OBM)

Our team will guide you with their expertise in choosing the right engine for your boat

ADD-ON OPTIONS

- Battery Package
- Teak deck finishing
- SS roll bar with waterski rope eyelet
- 1 x textile full boat cover
- Chains & ropes
- Road trailer, Beach trailer, and Roll up ladder
- Anchor + anchor chain
- 1 x galvanized steel anchor
- 2 x towing pad eye on transom
- Rolled up canopy
- 1 x steering console with storage under front seat



All the information on this leaflet are not contract binding and are an indication of the offer

DIMENSIONS (m)

Overall length inflated	6.48
Overall length deflated	5.50
Overall width inflated	2.54
Overall width deflated	1.80
Inside length	4.97
Inside width	1.52
Height inflated	depends on options mounded
Height deflated	depends on options mounded
Buoyancy tube diameter	0.48
Number of air chambers	5
Overall dry weight	775 kg

OUTBOARD MOTOR DATA

Shaft	short 21 inch
Minimum recommended power (HP)	80 HP
Maximum recommended power (HP)	115 HP
Maximum power allowed (HP)	150 HP
Maximum speed (knots)	30 knots (depending on the OBM and load)

CAPACITY

Passengers	10 persons
Maximum payload	1500 kg

INCLUDED IN THIS MODEL

- 1 x fiberglass hull and deck with integrated anti-slip texture
- 1 x Ocra-hypalon air tube
- 1 x inflatable bellow with 5 chambers in separate inflation valves and 5 overpressure valves - 1 x anchor locker with hatch
- 1 x galvanized steel anchor, 5m chain, 20 m rope
- 6 x rubber handles, 3 on each side
- 4 x SS medium size lifting pad eyes and 1 x heavy duty SS large pad eye in front of the hull
- 1 x engine mount bracket
- 1 x manual air pump and 2 x deck water rear evacuation hose
- 1 x set of safety ropes and 1 x SS rear roll bar with ladder
- 1 x steering console with storage under the front seat
- 1 x stand seat with roll cushion and 1 x backseat with storage
- 1 x stainless steel bimini

ADDITIONAL ITEMS NEEDED

Outboard Motor (OBM)

Our team will guide you with their expertise in choosing the right engine for your boat

ADD-ON OPTIONS

- Battery Package
- Teak deck finishing
- SS roll bar with waterski rope eyelet
- 1 x textile full boat cover
- 1 x galvanized steel anchor
- Chains & ropes
- Road trailer, Beach trailer, and Roll up ladder
- 1 x set (left/right) aluminum paddles with fixing bracket
- Anchor + anchor chain
- Rolled up canopy
- SS dive ladder
- 2 x Towing pad eye on transom

All the information on this leaflet are not contract binding and are an indication of the offer

DIMENSIONS (m)

Overall length inflated	6.48
Overall length deflated	5.50
Overall width inflated	2.54
Overall width deflated	1.80
Inside length	4.97
Inside width	1.52
Height inflated	depends on options mounted
Height deflated	depends on options mounted
Buoyancy tube diameter	0.48
Number of air chambers	5
Overall dry weight	775 kg

OUTBOARD MOTOR DATA

Shaft	short 21 inch
Minimum recommended power (HP)	80 HP
Maximum recommended power (HP)	115 HP
Maximum power allowed (HP)	150 HP
Maximum speed (knots)	30 knots (depending on the OBM and load)

CAPACITY

Passengers	10 persons
Maximum payload	1500 kg

INCLUDED IN THIS MODEL

- 1 x fiberglass hull and deck with integrated anti-slip texture
- 1 x Orca-hypalon air tube
- 1 x inflatable bellow with 5 chambers in separate inflation valves and 5 overpressure valves - 1 x anchor locker with hatch
- 1 x galvanized steel anchor, 5m chain, 20 m rope
- 6 x rubber handles, 3 on each side
- 4 x SS medium size lifting pad eyes and 1 x heavy duty SS large pad eye in front of the hull
- 1 x engine mount bracket
- 1 x plastic screw type hull drainage plug on transom and 1 x set of aluminum paddles
- 1 x manual air pump and 2 x deck water rear evacuation hose
- 1 x set of safety ropes
- 1 x roller bar with ladder and 1 x stainless steel bimini
- 4 x passenger seats
- 1 x stand seat with roll cushion

ADDITIONAL ITEMS NEEDED

Outboard Motor (OBM)

Our team will guide you with their expertise in choosing the right engine for your boat

ADD-ON OPTIONS

- Battery Package
- Teak deck finishing
- SS roll bar with waterski rope eyelet
- 1 x textile full boat cover and Rolled up canopy
- Road trailer, Beach trailer, and Roll up ladder
- Anchor + anchor chain
- Chains & ropes
- SS dive ladder
- 1 x steering console with storage under the front seat
- 1 x set (left/right) aluminum paddles with fixing bracket
- 2 x towing pad eye on transom

All the information on this leaflet are not contract binding and are an indication of the offer

DIMENSIONS (m)

Overall length inflated	6.48
Overall length deflated	5.50
Overall width inflated	2.54
Overall width deflated	1.80
Inside length	4.97
Inside width	1.52
Height inflated	depends on options mounted
Height deflated	depends on options mounted
Buoyancy tube diameter	0.48
Number of air chambers	5
Overall dry weight	775 kg

OUTBOARD MOTOR DATA

Shaft	short 21 inch
Minimum recommended power (HP)	80 HP
Maximum recommended power (HP)	115 HP
Maximum power allowed (HP)	150 HP
Maximum speed (knots)	30 knots (depending on the OBM and load)

CAPACITY

Passengers	10 persons
Maximum payload	1500 kg

INCLUDED IN THIS MODEL

- 1 x fiberglass hull and deck with integrated anti-slip texture
- 1 x Orca-hypalon air tube
- 1 x inflatable bellow with 5 chambers in separate inflation valves and 5 overpressure valves
- 1 x anchor locker with hatch
- 1 x galvanized steel anchor, 5m chain, 20 m rope
- 1 x set of safety ropes
- 8 x rubber handles, 4 on each side
- 4 x SS medium size lifting pad eyes and 1 x heavy duty SS large pad eye in front of the hull
- 1 x engine mount bracket and 1 x plastic screw type hull drainage plug transom
- 1 x set of aluminum paddles
- 1 x manual air pump, and 2 x deck water rear evacuation hose
- 1 x SS rear roll bar and 1 x steering console with storage under the front seat
- 1 x stand seat with roll cushion and 1 x backseat with storage
- 1 x central seat with dive bottle holder bracket
- 1 x SS dive ladder and 1 x stainless steel bimini

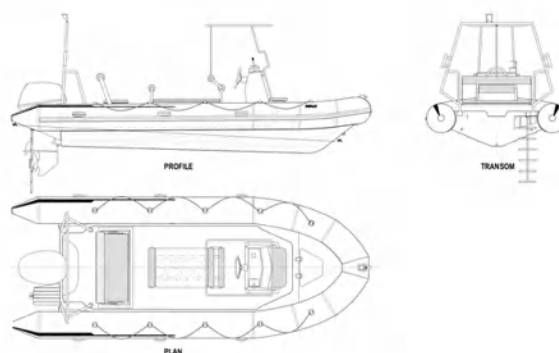
ADDITIONAL ITEMS NEEDED

Outboard Motor (OBM)

Our team will guide you with their expertise in choosing the right engine for your boat

ADD-ON OPTIONS

- Battery Package and Teak deck finishing
- SS roll bar with waterski rope eyelet
- 1 x textile full boat cover
- Road trailer, Beach trailer, and Roll up ladder
- Anchor + anchor chain
- Chains & ropes
- 1 x galvanized steel anchor
- 2 x towing pad eye on transom
- 1 x set (left/right) aluminum paddles with fixing bracket
- Rolled up canopy
- 1 x steering console with storage under the front seat
- Passenger seats



All the information on this leaflet are not contract binding and are an indication of the offer





DIMENSIONS (m)

Overall length inflated	8.50
Overall length deflated	8.20
Overall width inflated	3.50
Overall width deflated	3.10
Inside length	6.50
Inside width	2.20
Height inflated	depends on options mounded
Height deflated	depends on options mounded
Buoyancy tube diameter	0.6
Number of air chambers	5
Overall dry weight	3100 kg

OUTBOARD MOTOR DATA

Shaft	short 21 inch
Minimum recommended power (HP)	200 HP
Maximum recommended power (HP)	300 HP
Maximum speed (knots)	30 knots (depending on the OBM and load)

CAPACITY

Passengers	16 persons
Maximum payload	1500 kg

INCLUDED IN THIS MODEL

- 1 x fiberglass hull and deck with integrated anti-slip texture
- 1 x Orca-hypalon air tube
- 1 x inflatable bellow with 7 chambers in separate inflation valves and 7 overpressure valves
- 1 x anchor locker with hatch
- 1 x galvanized steel anchor, 3m chain, 15m rope
- 1 x plastic screw type hull drainage plug transom
- 1 x set of safety ropes and 1 x anchor locker with hatch
- 8 x rubber handles, 4 on each side
- 1 x heavy duty SS large pad eye in front of the hull
- 1 x engine mount bracket
- 1 x set of aluminum paddles
- 1 x stand seat with roll cushion
- 1 x manual air pump and 2 x deck water rear evacuation hose

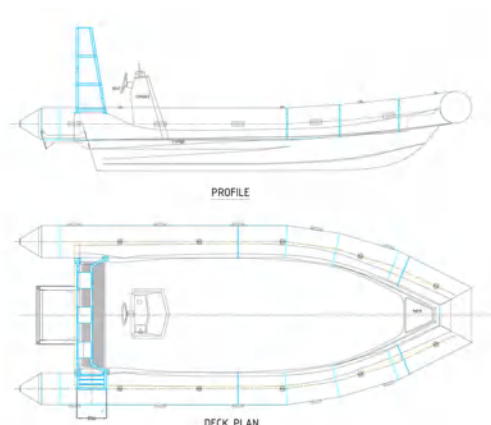
ADDITIONAL ITEMS NEEDED

Outboard Motor (OBM)

Our team will guide you with their expertise in choosing the right engine for your boat

ADD-ON OPTIONS

- Battery Package
- Teak deck finishing
- SS roll bar with waterski rope eyelet
- 1 x textile full boat cover
- Road trailer, Beach trailer, and Roll up ladder
- Anchor + anchor chain
- Chains & ropes
- 1 x galvanized steel anchor
- 1 x set (left/right) aluminum paddles with fixing bracket
- 2 x towing pad eye on transom
- Rolled up canopy
- 1 x steering console with storage under the front seat



All the information on this leaflet are not contract binding and are an indication of the offer

DIMENSIONS (m)

Overall length inflated	8.50
Overall length deflated	8.20
Overall width inflated	3.50
Overall width deflated	3.10
Inside length	6.50
Inside width	2.20
Height inflated	depends on options mounded
Height deflated	depends on options mounded
Buoyancy tube diameter	0.6
Number of air chambers	5
Overall dry weight	3100 kg

OUTBOARD MOTOR DATA

Shaft	short 21 inch
Minimum recommended power (HP)	200 HP
Maximum recommended power (HP)	300 HP
Maximum speed (knots)	30 knots (depending on the OBM and load)

CAPACITY

Passengers	16 persons
Maximum payload	1500 kg

INCLUDED IN THIS MODEL

- 1 x fiberglass hull and deck with integrated anti-slip texture
- 1 x Orca-hypalon air tube
- 1 x inflatable bellow with 7 chambers in separate inflation valves and 7 overpressure valves
- 1 x anchor locker with hatch
- 1 x galvanized steel anchor, 3m chain, 15m rope and 8 x rubber handles, 4 on each side
- 1 x plastic screw type hull drainage plug on transom
- 1 x heavy duty SS large pad eye in front of the hull and 1 x engine mount bracket
- 1 x set of safety ropes and 1 x set of aluminum paddles
- 1 x manual air pump and 2 x deck water rear evacuation hose
- 1 x SS rear roll bar
- 1 x steering console with storage under the front seat and 1 x stand seat with roll cushion
- 1 x backseat with storage and 1 x stainless steel bimini

ADDITIONAL ITEMS NEEDED

Outboard Motor (OBM)

Our team will guide you with their expertise in choosing the right engine for your boat

ADD-ON OPTIONS

- Battery Package
- Teak deck finishing
- SS roll bar with waterski rope eyelet
- 1 x textile full boat cover
- Road trailer, Beach trailer, and Roll up ladder
- Anchor + anchor chain
- Chains & ropes
- 1 x galvanized steel anchor
- 1 x deck shower
- 1 x steering console with storage under the front seat
- Rolled up canopy
- 2 x towing pad eye on transom
- 1 x set (left/right) aluminum paddles with fixing bracket
- 1 x deck shower
- 1 x SS dive shower

All the information on this leaflet are not contract binding and are an indication of the offer

DIMENSIONS (m)

Overall length inflated	8.50
Overall length deflated	8.20
Overall width inflated	3.50
Overall width deflated	3.10
Inside length	6.50
Inside width	2.20
Height inflated	depends on options mounted
Height deflated	depends on options mounted
Buoyancy tube diameter	0.6
Number of air chambers	5
Overall dry weight	3100 kg

OUTBOARD MOTOR DATA

Shaft	short 21 inch
Minimum recommended power (HP)	200 HP
Maximum recommended power (HP)	300 HP
Maximum speed (knots)	30 knots (depending on the OBM and load)

CAPACITY

Passengers	16 persons
Maximum payload	1500 kg

INCLUDED IN THIS MODEL

- 1 x fiberglass hull and deck with integrated anti-slip texture
- 1 -x Ocracore air tube
- 1 x inflatable bellow with 7 chambers in separate inflation valves and 7 overpressure valves
- 1 x anchor locker with hatch
- 1 x galvanized steel anchor, 3m chain, 15m rope
- 8 x rubber handles, 4 on each side
- 1 x heavy duty SS large pad eye in front of the hull
- 1 x plastic screw type hull drainage plug on transom
- 1 x set of safety ropes and 1 x engine mount bracket
- 1 x set of aluminum paddles and 1 x manual air pump
- 2 x deck water rear evacuation hose and 1 x roller bar with ladder
- 1 x stand seat with roll cushion and 5 x passenger seats

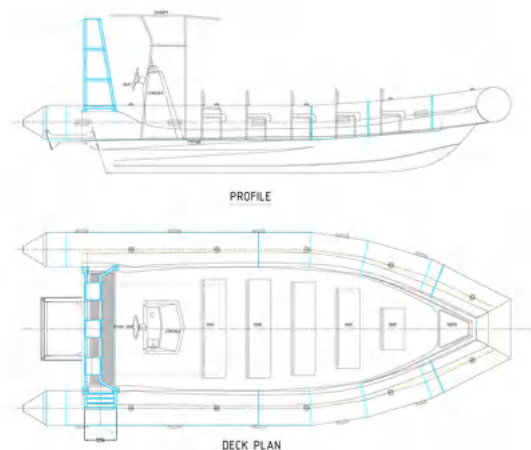
ADDITIONAL ITEMS NEEDED

Outboard Motor (OBM)

Our team will guide you with their expertise in choosing the right engine for your boat

ADD-ON OPTIONS

- Battery Package
- Teak deck finishing
- SS roll bar with waterski rope eyelet
- 1 x textile full boat cover
- Road trailer, Beach trailer, and Roll up ladder
- Anchor + anchor chain
- Chains & ropes
- 1 x galvanized steel anchor
- 2 x towing pad eye transom
- 1 x set (left/right) aluminum paddles with fixing bracket
- 1 x stainless steel bimini
- 1 x deck shower
- Rolled up canopy
- 1 x steering console with storage under the front seat
- 1 x SS dive ladder



All the information on this leaflet are not contract binding and are an indication of the offer

DIMENSIONS (m)

Overall length inflated	8.50
Overall length deflated	8.20
Overall width inflated	3.50
Overall width deflated	3.10
Inside length	6.50
Inside width	2.20
Height inflated	depends on options mounted
Height deflated	depends on options mounted
Buoyancy tube diameter	0.6
Number of air chambers	5
Overall dry weight	3100 kg

OUTBOARD MOTOR DATA

Shaft	short 21 inch
Minimum recommended power (HP)	200 HP
Maximum recommended power (HP)	300 HP
Maximum speed (knots)	30 knots (depending on the OBM and load)

CAPACITY

Passengers	16 persons
Maximum payload	1500 kg

INCLUDED IN THIS MODEL

- 1 x fiberglass hull and deck with integrated anti-slip texture
- 1 x Orca-hypalon air tube
- 1 x inflatable bellow with 7 chambers in separate inflation valves and 7 overpressure valves
- 1 x anchor locker with hatch
- 1 x galvanized steel anchor, 3m chain, 15m rope
- 6 x rubber handles 3 of each side and 1 x heavy duty SS large pad eye in front of the hull
- 1 x engine mount bracket and 1 x set of aluminum paddles
- 1 x set of safety ropes
- 1 x manual air pump and 2 x deck water rear evacuation
- 1 x stand seat with roll cushion and 1 x back seat with storage
- 1 x roller bar with ladder and 1 x stainless steel bimini
- 1 x deck shower and 1 x central seat with dive bottle holder bracket
- 1 x SS dive ladder

ADDITIONAL ITEMS NEEDED

Outboard Motor (OBM)

Our team will guide you with their expertise in choosing the right engine for your boat

ADD-ON OPTIONS

- Battery Package
- Teak deck finishing
- SS roll bar with waterski rope eyelet
- 1 x textile full boat cover
- Road trailer
- Beach trailer
- Roll up ladder
- Anchor + anchor chain
- Chains & ropes
- 1 x galvanized steel anchor
- 2 x towing pad eye on transom
- 1 x set (left/right) aluminium paddles with fixing brackets
- Rolled up canopy
- 1 x steering console with storage under the front seat
- Passenger seats
- 1 x deck shower

All the information on this leaflet are not contract binding and are an indication of the offer



pulse

Deluxe



OPTIONS AVAILABLE ON DEMAND

- SS Dive ladder (only for 65 onwards)
- Bimini cover
- Deck shower (only for 65 onwards)
- Battery package (only for 65 onwards)
- Teak deck finishing
- SS roll bar with waterski rope eyelet
- 1 x textile full boat cover
- Road trailer
- Beach trailer
- Roll up ladder
- Anchor + anchor chain
- Long shaft engine mount bracket adapter (for PULSE 35 only)

NOTES

- All weight and dimensions is indicative and can vary slightly from boat to boat
- All prices are ex-factory
- Transport can be organized depending on delivery location
- Delivery-timing depends on availability in stock
- Dry weight is the weight of hull, deck, tube and basic accessories.





The first yachting shop in Sri Lanka – we supply everything for leisure boat related activities.

Best place in Sri Lanka to get marine related products to, various stainless steel parts and repair services just to name a few.

- Canoes
- Surf boats, bodyboards, SUP's and accessories
- Sail making, designing & repairing
- Cushion making, sun shade blinds, life jackets
- Electric outboard engines and marine accessories
- Pontoons and infrastructures





info@slyg.global
+94 702 713 007
Kabalana, Kathaluwa, Ahangama, Sri Lanka
www.slyg.global